

# Dishwash Detergent for Hard Water

  
Jangro

## Product Usage Guide

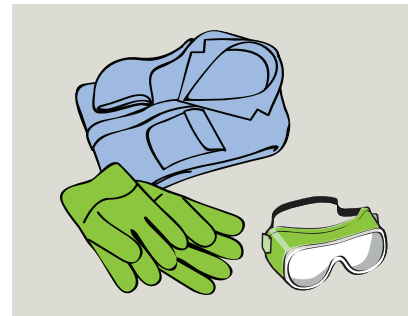
Professional



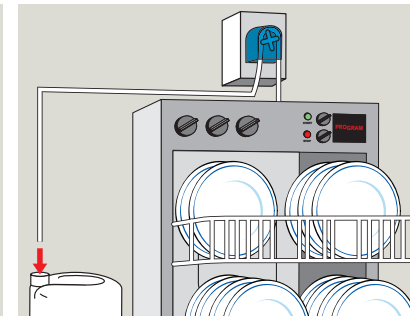
### BB070-20



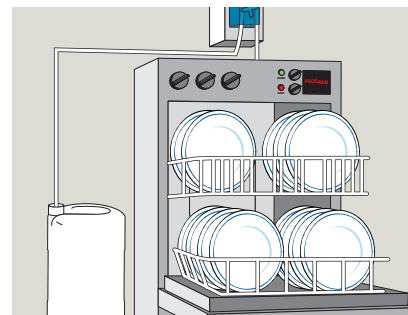
#### Automatic Dishwashing Machines



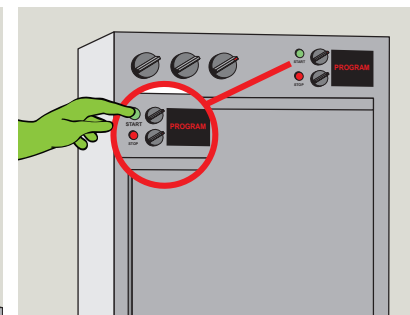
**1** Use appropriate PPE as indicated in COSHH/REACH data.



**2** Connect product to electronic dosing system following manufacturers instructions.



**3** Product should be diluted at the rate of 1-3ml of detergent per litre of water.



**4** Select program and press start.

#### Health & Safety

Please refer to relevant COSHH Safety Data Sheet



Scan for further product details



Not to be used for manual dishwashing.

[www.jangro.net](http://www.jangro.net)